

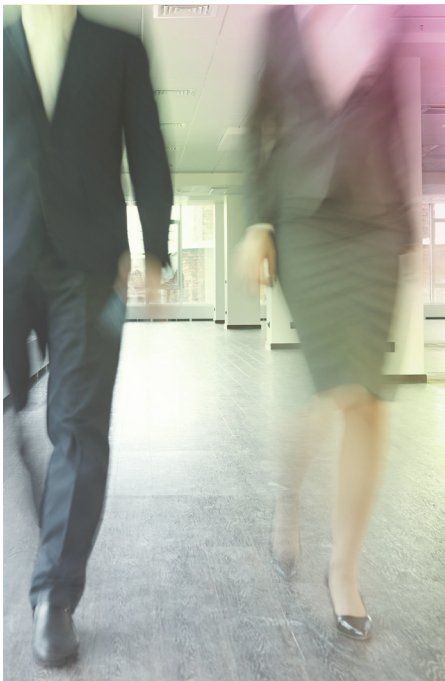
EMERGENCY EVACUATION UPHOLDING SAFETY STANDARDS



In today's fast-paced environment, establishing a comprehensive emergency evacuation strategy is pivotal for safeguarding individuals in any facility. tds Life-Safety emerges as a premier solution, meticulously designed to ensure real-time accountability during emergencies. With its advanced capabilities, it not only streamlines rescue planning but also reinforces a culture of safety across all sectors. By digitizing emergency procedures, tds Life-Safety allows for precise tracking of everyone on-site employees, visitors, and contractors alike thereby mitigating the risks associated with potential emergencies.

A key innovation in this system is the 'Swipe Safe' feature at designated Muster Points. This ensures that personnel are efficiently accounted for, while providing emergency responders with immediate access to critical data. Such long-term insights are invaluable in strengthening evacuation methodologies and enhancing overall safety strategies. tds Life-Safety's integrative design also extends to occupancy management, presenting users with real-time insights into personnel location and ensuring efficient operational compliance across industries, including those with the most stringent safety regulations.

TDS Life-Safety: Comprehensive Emergency Evacuation Planning



Tds Life-Safety is an advanced Emergency Evacuation Planning solution that provides real-time, on-site accountability during emergency events. It optimizes rescue planning and management, ensuring the safety of all individuals on your premises.

With tds Life-Safety, missing persons are quickly identified through real-time updates as individuals 'Swipe Safe' at designated Muster Points. This data is instantly accessible on intelligent mobile devices, providing crucial insights into the progress of the evacuation.

Tds Life-Safety also functions as an occupancy management tool, integrating access control, life safety, and visitor management into a single comprehensive solution. Through a combination of Head-Counting, Muster Points, Last-Known-Locations, and a Safety Information Panel (SIP), tds Life-Safety provides real-time insights into evacuation progress, identifying individuals who have 'Swiped Safe' and offering an extensive reporting suite to assist emergency services in locating individuals who remain in danger.

Key Features

- ✔ **Real-Time Accountability**
Tracks and accounts for all individuals, ensuring no one is left unaccounted for during emergencies.
- ✔ **Occupancy Management**
Allows you to set maximum occupancy limits for zones, with alerts and access restrictions based on those thresholds.
- ✔ **Visitor Mustering**
Ensures effective mustering of visitors, filling a critical gap in other solutions.
- ✔ **Multiple Trigger Methods**
Mustering can be triggered through various inputs like fire alarms, panic buttons, software interfaces, or manually smart card readers.
- ✔ **Dashboard Overview**
Provides a detailed view of zones, buildings, and floors, enabling precise tracking and accountability.
- ✔ **Safety Information Panel**
Role-Based display, tracks and notifies the presence of essential personnel, such as fire marshals and first responders, in real time.
- ✔ **Muster Points and Backup Systems**
Ensures safety even if individuals forget their access cards, with robust backup systems for card-less mustering.
- ✔ **End-to-End Support**
Includes all necessary hardware and software, with support for various technologies and third-party integrations.
- ✔ **High-Level Integration**
Seamlessly integrates with leading security systems like Lenel S2, offering comprehensive mustering solutions through direct transaction imports and autonomous emergency management.
- ✔ **Mobile Registrations**
Enhances security and mustering with the tds MIPS mobile application, allowing card validation, personnel authentication, and mustering via mobile devices.
- ✔ **Muster App**
Offers real-time reports on mustered and missing personnel, with the ability to manually muster and mark individuals as safe.
- ✔ **Contactless Detections**
Add UHF technology for passive onsite, offsite and mustering.

Industry Applications

Life-Safety is particularly suited for industries with stringent safety regulations, such as manufacturing, pharmaceutical, and heavy industry sectors. These industries require precise mustering capabilities to ensure compliance and safety. Our solution's flexibility also supports emergency drills and simulation exercises, ensuring preparedness and facilitating precise control and accountability during real emergencies.

Trusted by numerous high-profile pharmaceutical and manufacturing companies, Life-Safety is the premier choice for operational safety and compliance, offering unparalleled integration capabilities and comprehensive support for diverse technologies.

Use Case Solutions



Manufacturing



Corporate & Urban

- Fire I/O for emergency initiation
- Zone Based Evacuations
- SIP, custom roles
- Internal & external muster stations
- High visibility muster stations
- Visitors & Contractors
- Tablet App for reporting and manual mustering
- Validate card holders, with mobile card reader

- Fire I/O for emergency initiation + integrations for alternative evacuation sources
- SIP, custom roles
- External mobile mustering + UHF passive mustering on exit
- Visitors & Contractors
- Tablet App for reporting
- Occupancy management, access restrictions with access control integration

Evacuation Success Roadmap

Accountability	ERT Mgmt.	Evacuation	Missing Lists	Tracking	Testing
When personnel enter and depart sites, the TDS SIP automatically updates, displaying real-time information relating to the headcount of personnel on-site at any given time.	TDS SIP provides full visibility of available Emergency Response Team (ERT) members should an incident arise on-site and emergency assistance is required.	In case an emergency requires a site evacuation, personnel will evacuate the site and go towards their designated Muster Point where they will Swipe Safe using their unique ID badge.	Missing lists are automatically updated upon the initiation of the evacuation process. Missing Lists deem all personnel 'missing' at initiation and are updated in real-time once a user has Swiped Safe.	TDS unique reporting functionality enables ERT's to pinpoint the Last Known Locations of missing persons, increasing the success rates of rescue management efforts.	The emergency activation device can be used to test for scheduled site evacuations, assisting on-site personnel with emergency planning, scenario decision-making and practices.